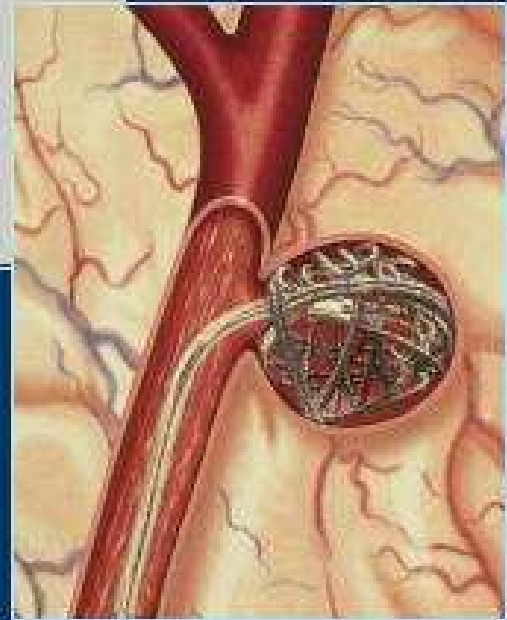
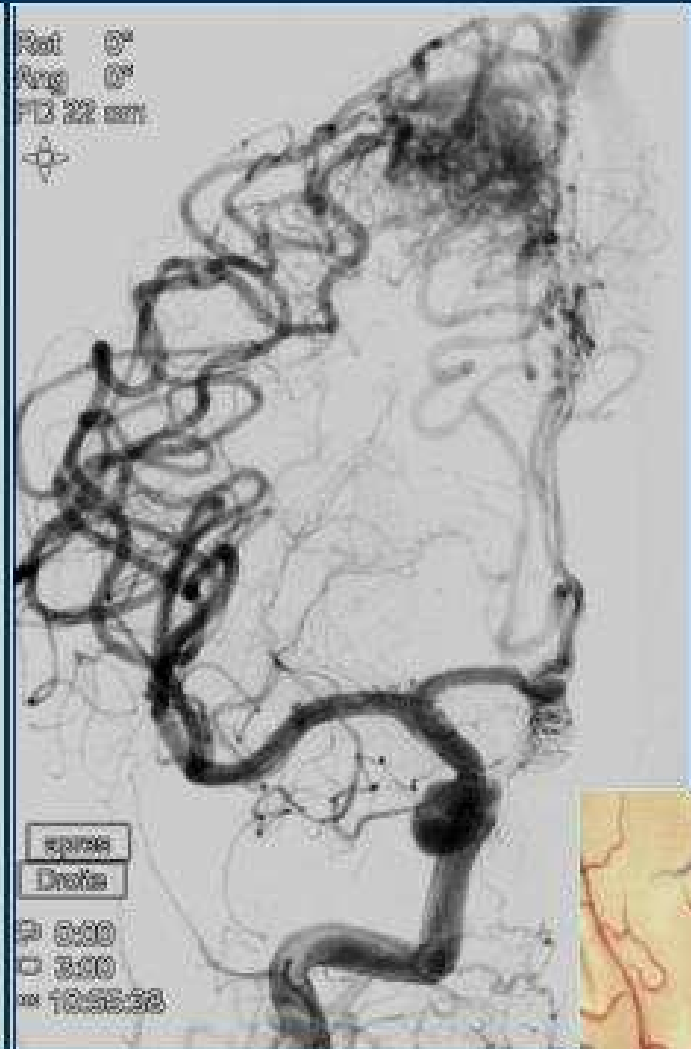
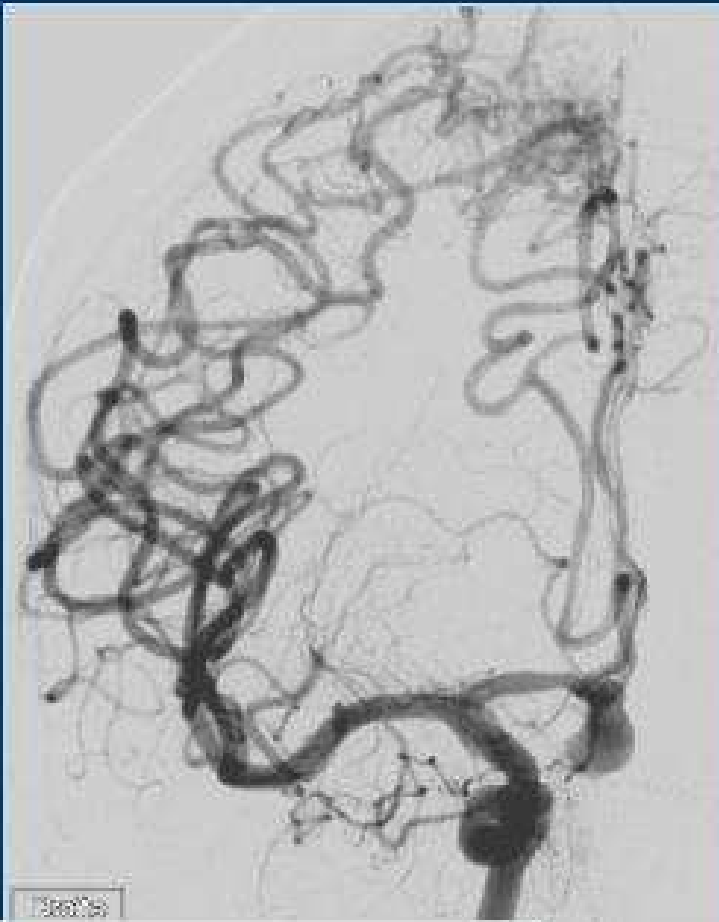


samedi

Elisabeth, 43 ans  
Ethylo-tabagique  
Céphalées depuis 3 j  
Retrouvée inconsciente  
Glasgow 7

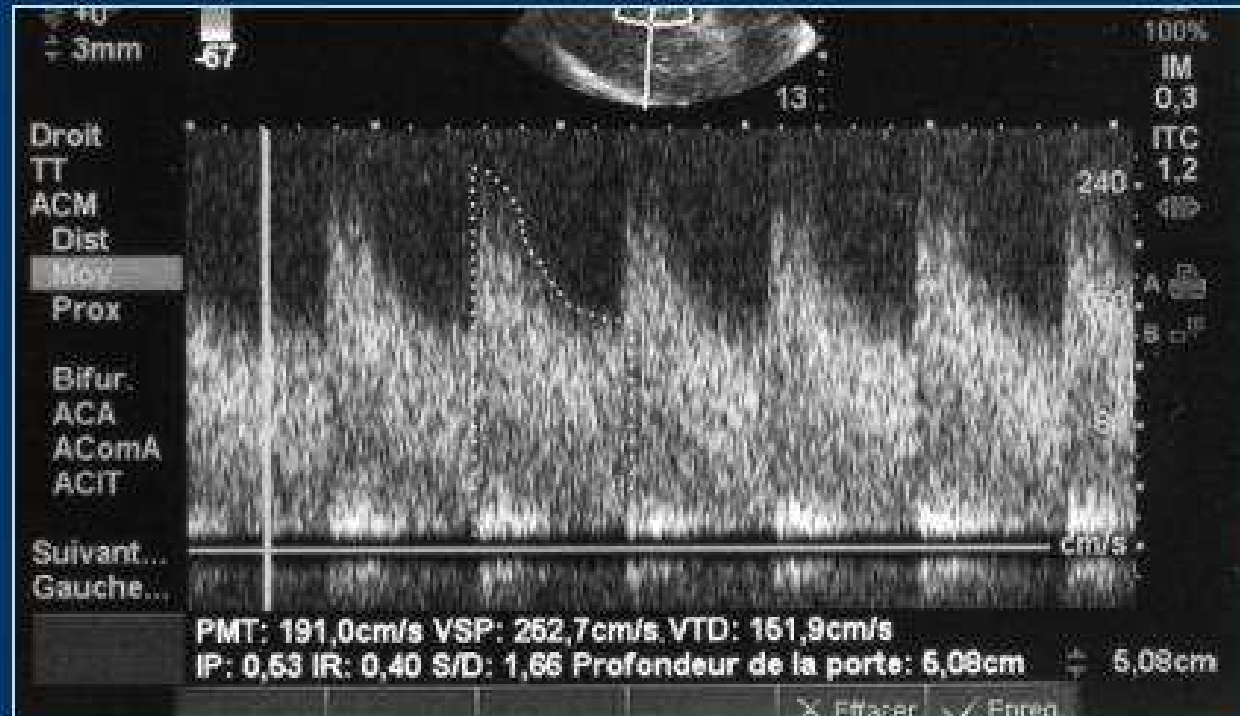


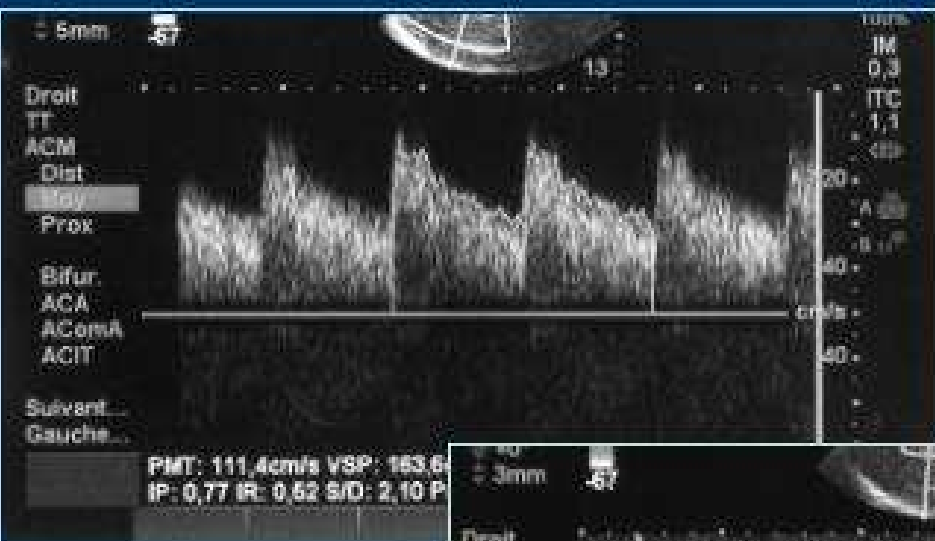


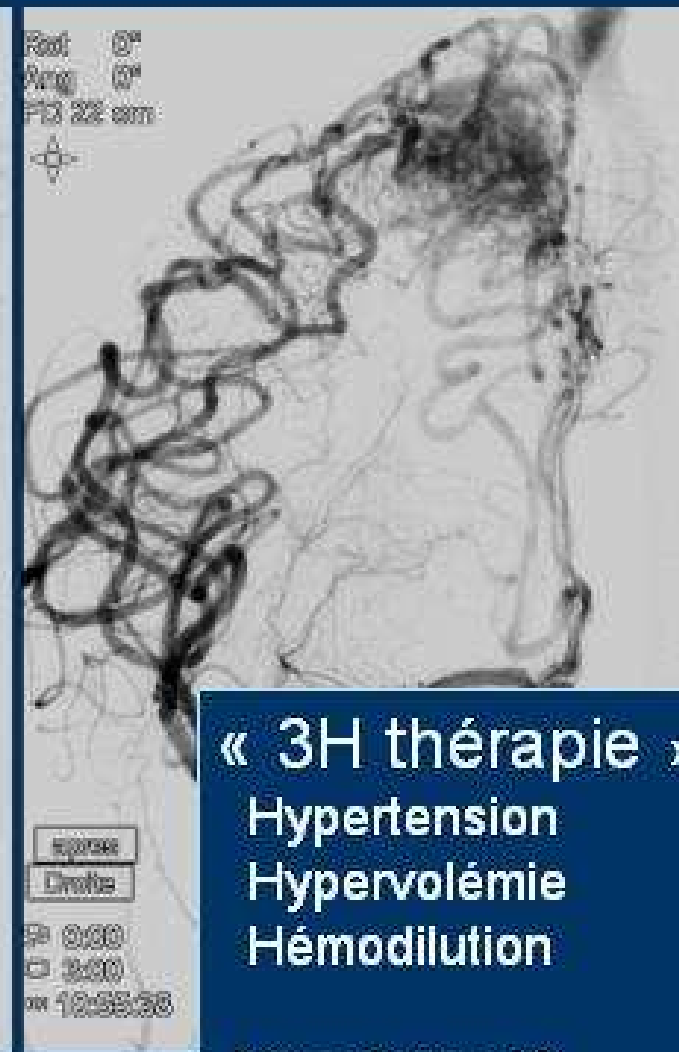
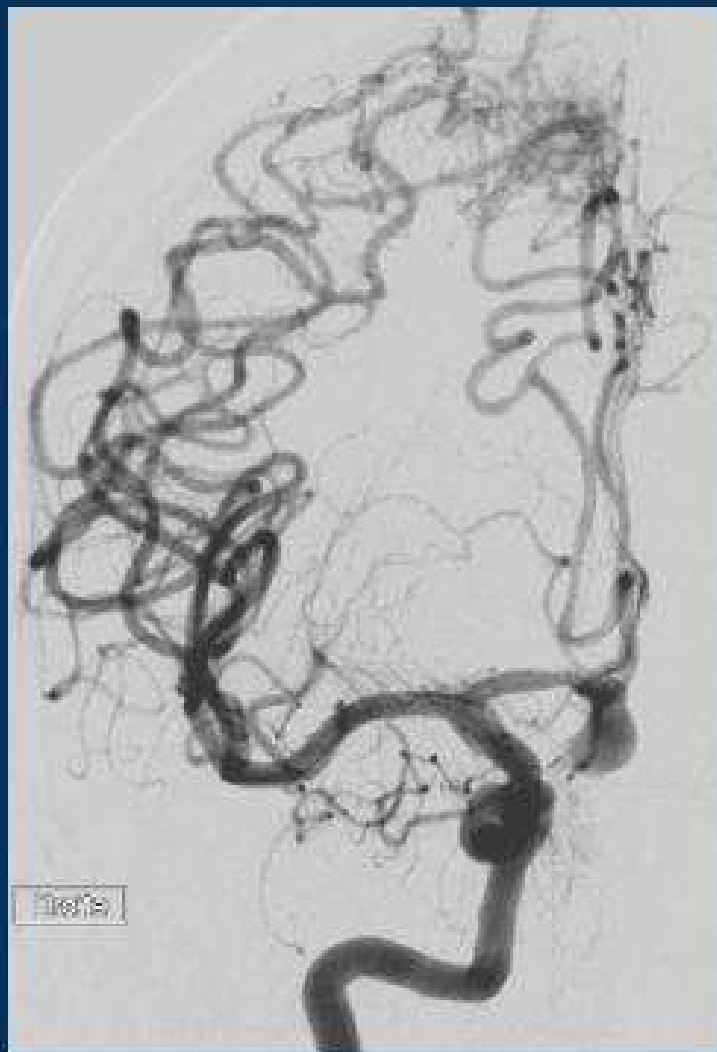
lundi



mardi ( J 3 )



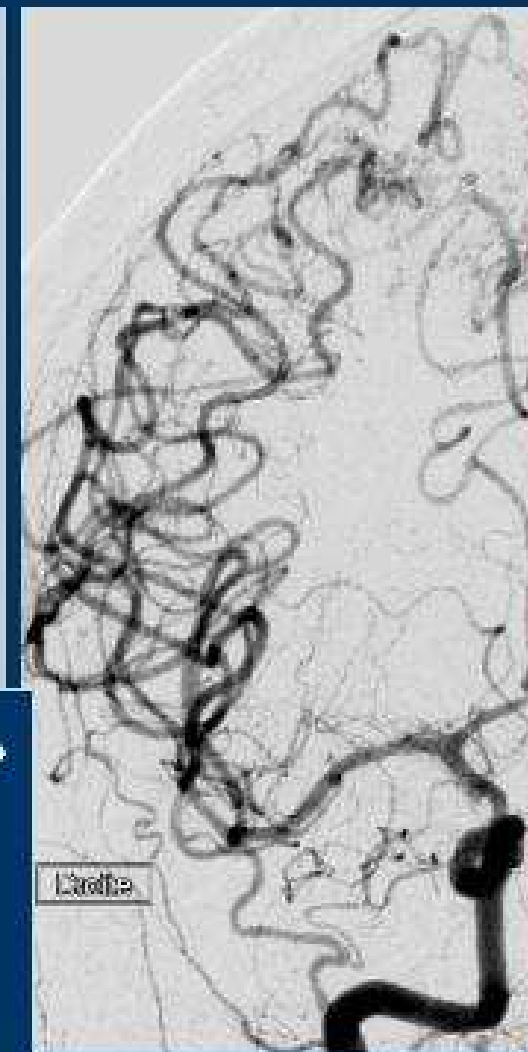




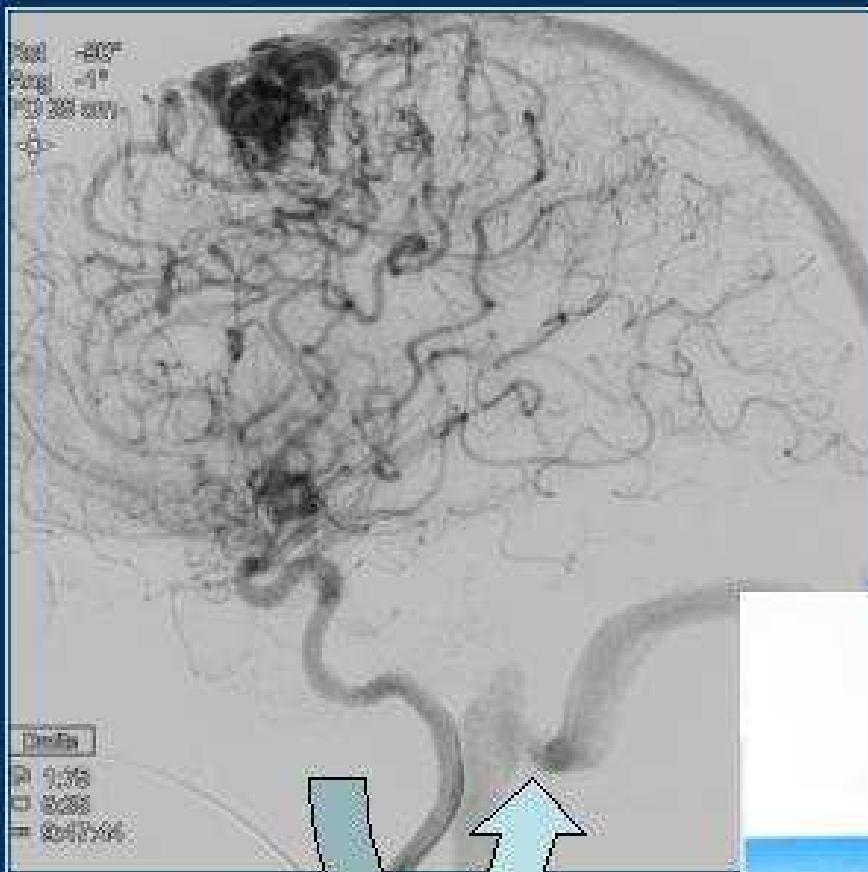
« 3H thérapie »  
Hypertension  
Hypervolémie  
Hémodilution

Nimodipine IA  
Angioplastie

lundi



mercredi



# JVIR

Journal of Vascular and Interventional Radiology

Volume 20

Number 4

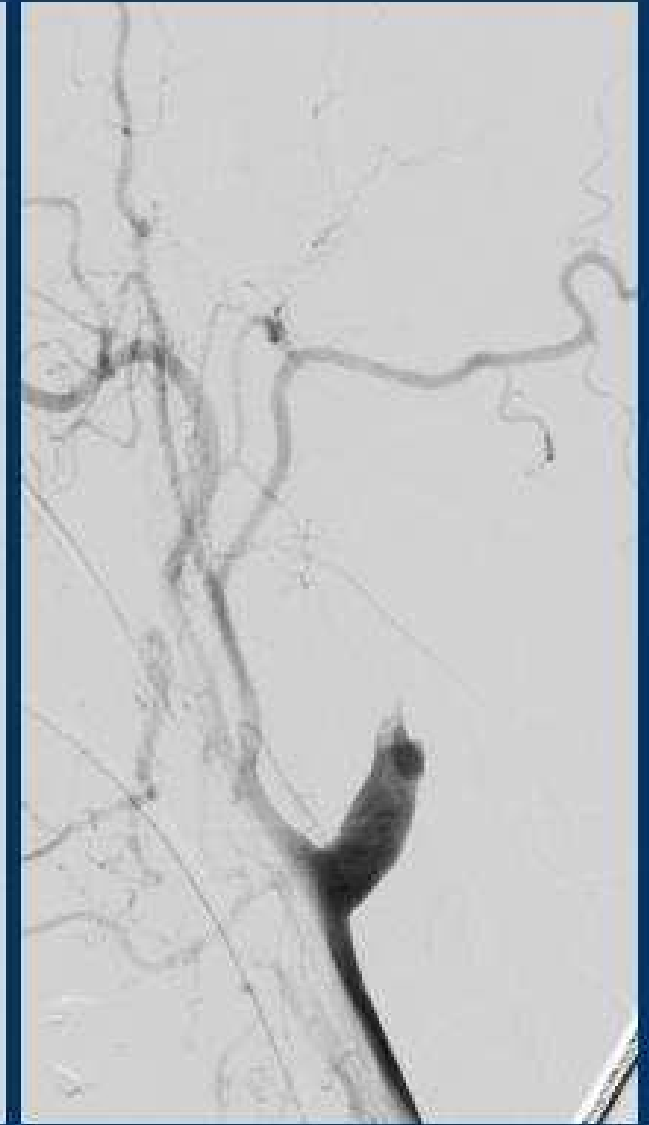
April 2009

• **Special Communication**

Complications of Modern Diagnostic Cerebral Angiography in an Academic Medical Center ..... 44

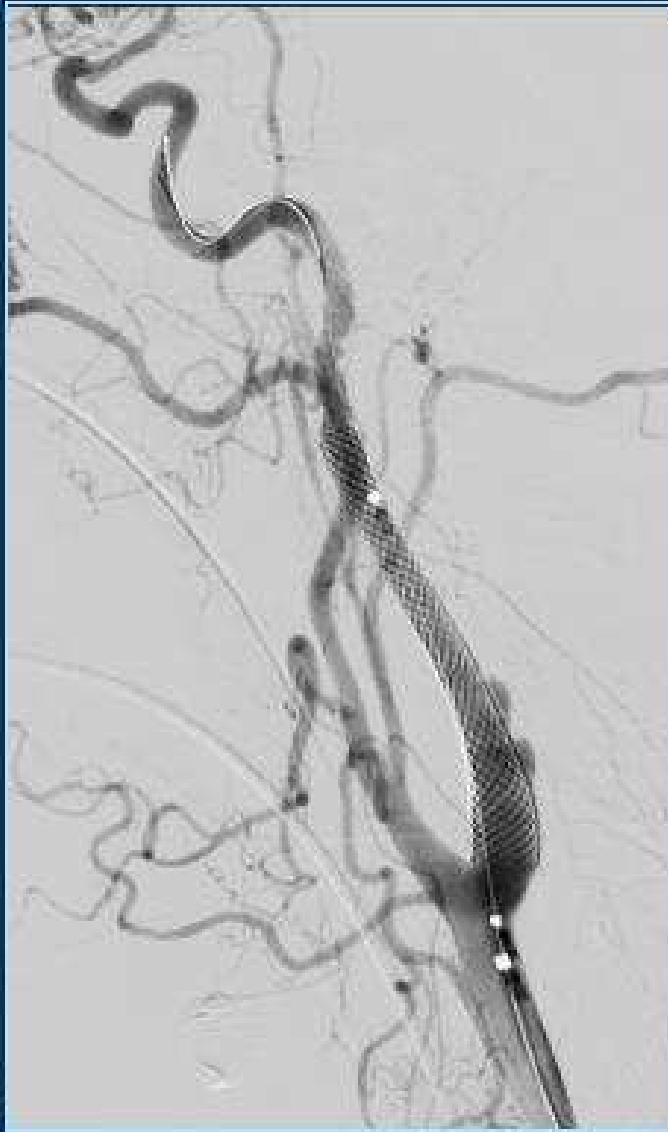
*Johanna T. Fifi, Philip M. Meyers, Sean D. Lavine, Virginia Cox, Lynn Silverberg, Sundeeep Mangla, and John Pilo-Spellman*

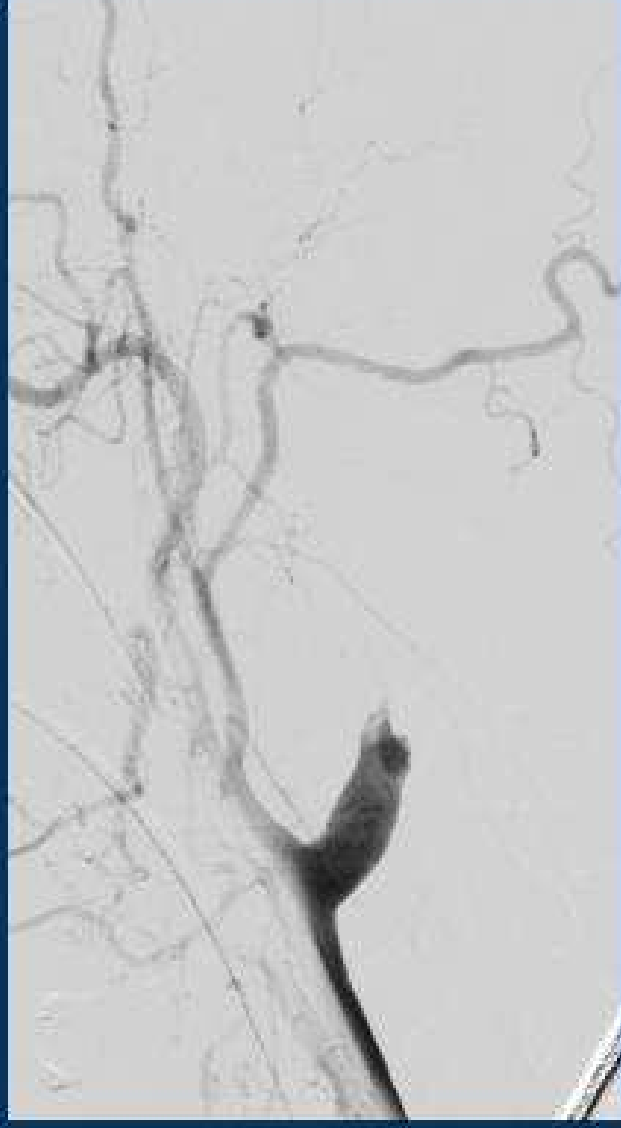
Modern catheter cerebral angiography performed by neurointerventionalists is associated with a low complication rate [redacted] in a highly complex patient population.

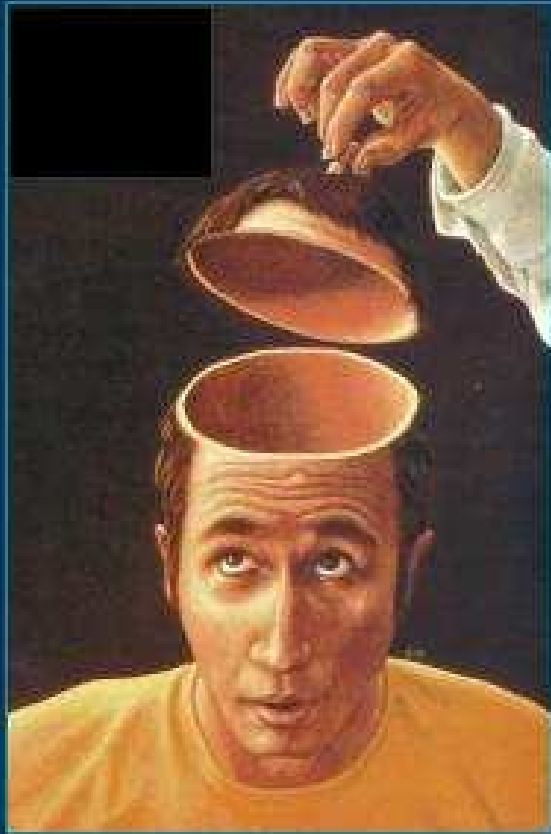












se souvenir de la loi des  
emm....maximum et,

quand survient la première  
complication, pensez tout de  
suite à la possibilité de suivantes

